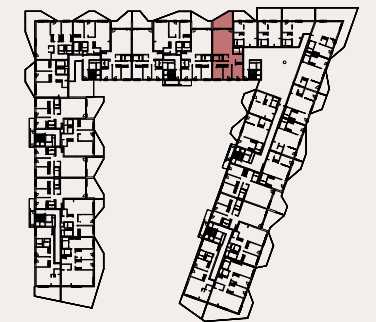
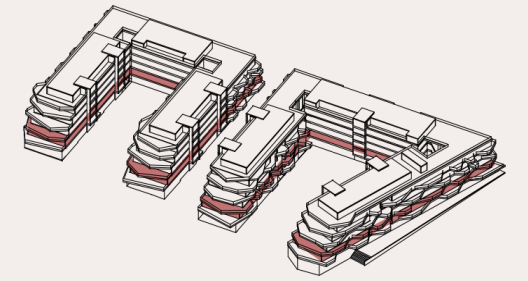




▲  
A

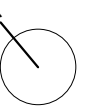
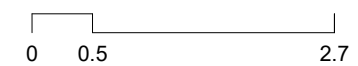


**TOTAL LIVING AREA (m<sup>2</sup>)**

|                     |                      |
|---------------------|----------------------|
| BATH 1              | 3.66 m <sup>2</sup>  |
| BEDROOM 1           | 8.18 m <sup>2</sup>  |
| BEDROOM 2           | 11.74 m <sup>2</sup> |
| CORE                | 2.12 m <sup>2</sup>  |
| DINING ROOM-KITCHEN | 34.44 m <sup>2</sup> |
| ENTRY-HALL          | 9.53 m <sup>2</sup>  |
| MASTER BATH         | 3.64 m <sup>2</sup>  |
| MASTER BEDROOM      | 13.56 m <sup>2</sup> |
|                     | 86.86 m <sup>2</sup> |
| TERRACE             | 18.24 m <sup>2</sup> |
|                     | 18.24 m <sup>2</sup> |

|                          | PROJECT AREA | DECREE 218/2005 |
|--------------------------|--------------|-----------------|
| INTERIOR LIVING AREA     | 86.87        |                 |
| TERRACE LIVING AREA      | 18.24        |                 |
| TOTAL LIVING AREA        | 105.11       | 95.56           |
| INT CONST AREA + PP. CA  | 119.85       | -               |
| TERRACE CONSTRUCTED AREA | 19.54        | -               |
| TOTAL CONSTRUCTED AREA   | 139.39       | 128.54          |

(Include proper constructed area, CA proportional part and terrace)



The information contained in this plans can be subject to changes until the end of the project. In case of disagreement between the comercial information and the information of the last project approved, it will attend always the last project approved.

BASIC DESIGN 03/12/2024

