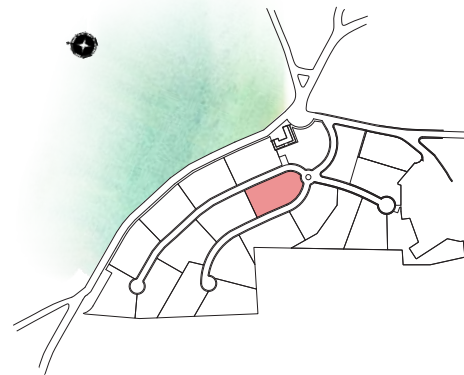


CORALLISA

SIGNATURE HOMES IBIZA

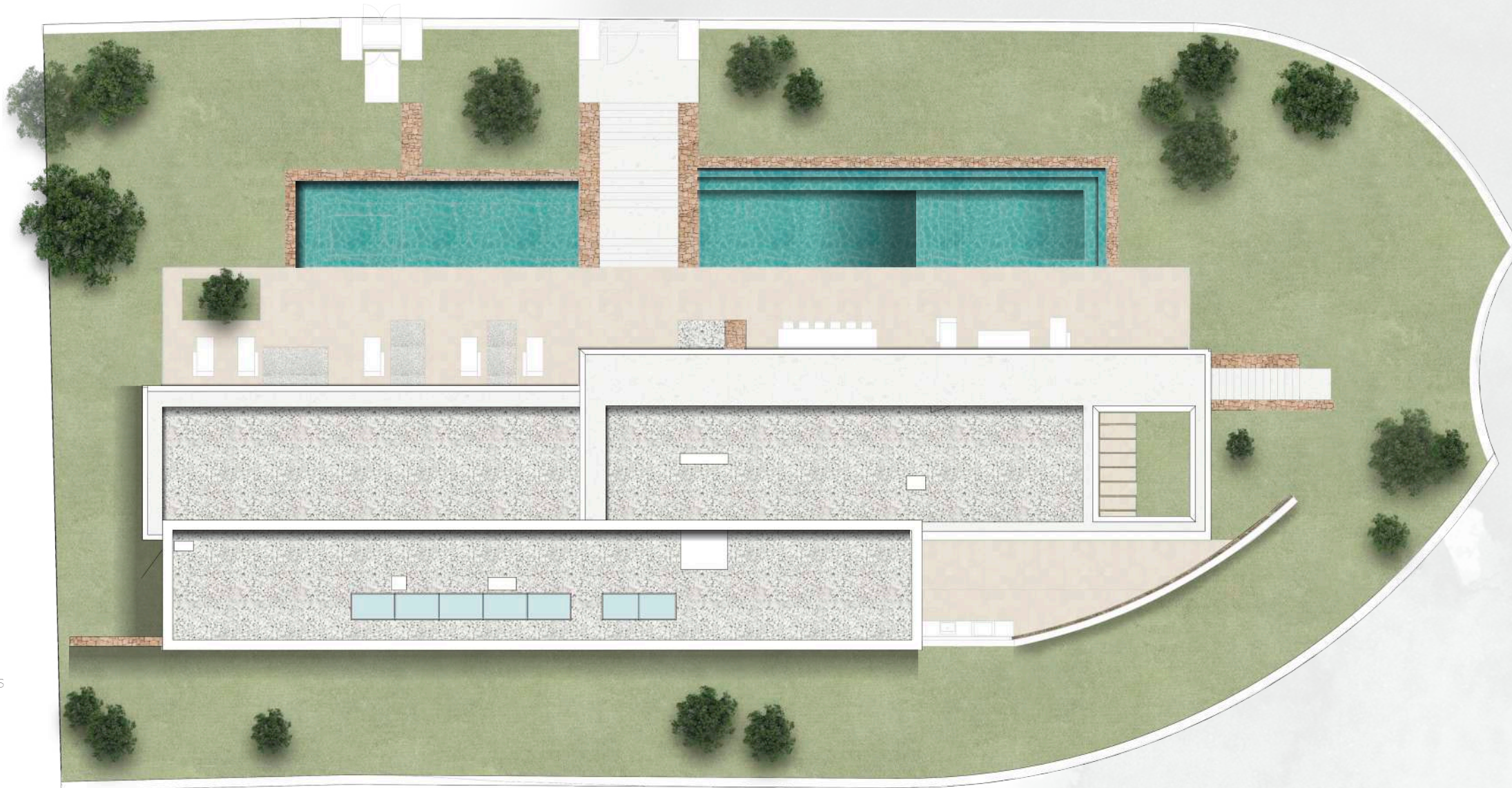
VILLA 7 TOP VIEW

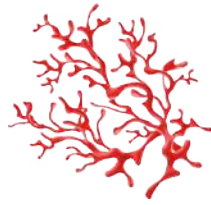
Plot surface	1.515,30 sqm
Basement	205,02 sqm
Ground Floor	321,88 sqm
Total Interior	526,90 sqm
Covered Terrace	52,78 sqm
Uncovered Terrace	179,65 sqm
Total Exterior	232,43 sqm
Total Interior & Exterior	759,33 sqm



Project developed by:
CORALLISA 2019 PRIME DEVELOPMENT

The floor plan above is not final as it has been designed in accordance with the Building Execution Project and, consequently, CORALLISA 2019 PRIME DEVELOPMENT reserves the right to include whatever changes due to technical and/or legal imperatives required by any public Administration or Agency. These changes, in any case, will be in accordance with the progress of the construction work. The accessory elements (for example, including the kitchen) are merely for illustrative purposes. The rotation sense of doors and the distribution of sanitary fittings are not binding. The surface areas shown are approximate and, may be altered for technical and/or legal reasons in the course of the construction work.





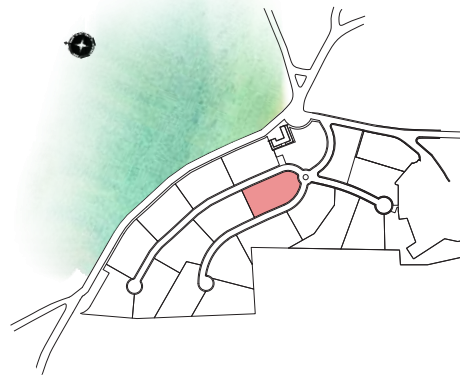
CORALLISA

SIGNATURE HOMES IBIZA

VILLA 7 GROUND FLOOR

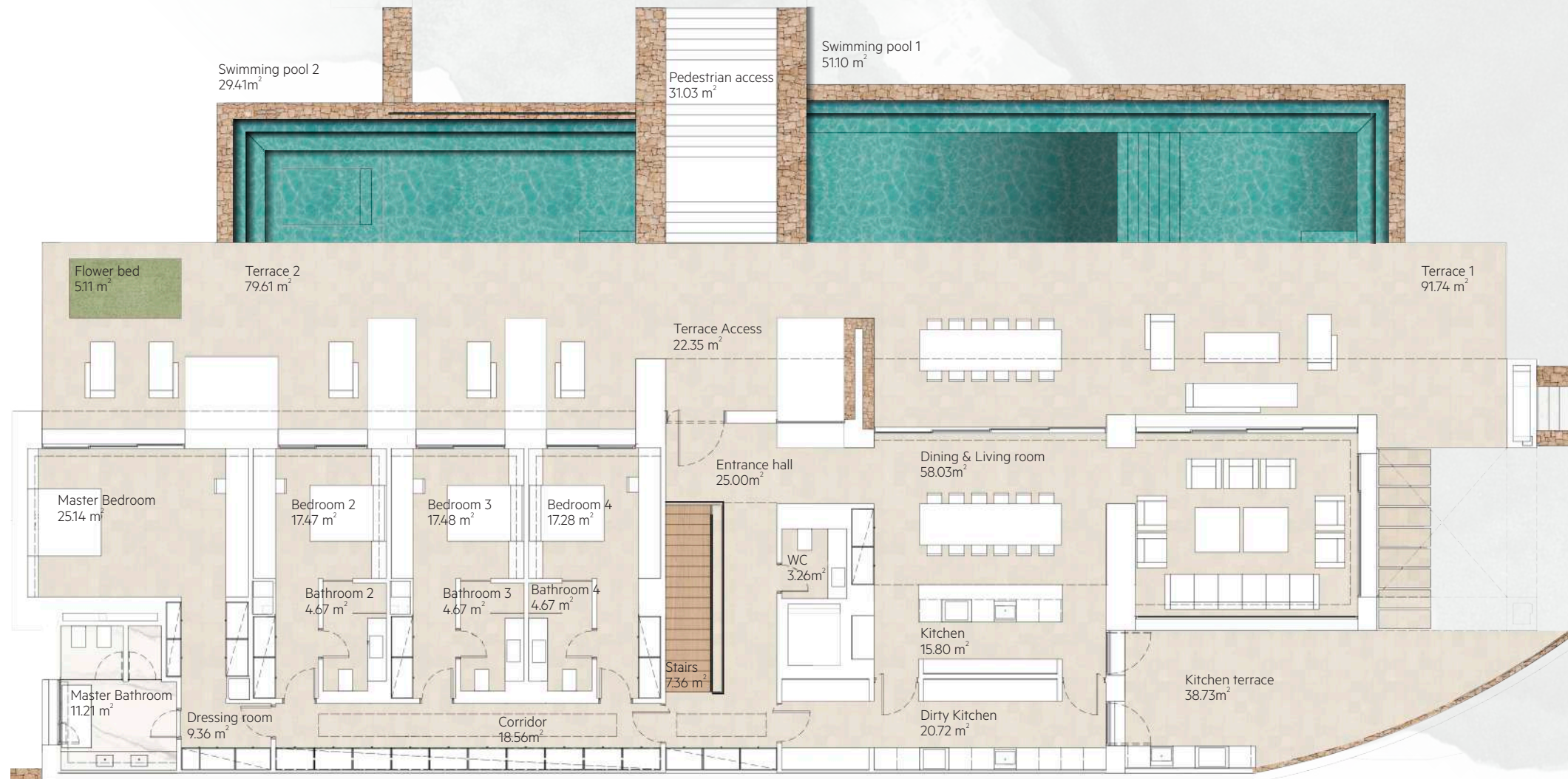
Plot surface	1.515,30 sqm
Basement	205,02 sqm
Ground Floor	321,88 sqm
Total Interior	526,90 sqm
Covered Terrace	52,78 sqm
Uncovered Terrace	179,65 sqm
Total Exterior	232,43 sqm

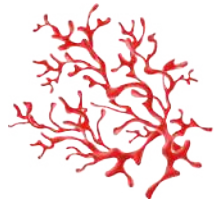
Total Interior & Exterior 759,33 sqm



Project developed by:
CORALLISA 2019 PRIME DEVELOPMENT

The floor plan above is not final as it has been designed in accordance with the Building Execution Project and, consequently, CORALLISA 2019 PRIME DEVELOPMENT reserves the right to include whatever changes due to technical and/or legal imperatives required by any public Administration or Agency. These changes, in any case, will be in accordance with the progress of the construction work. The accessory elements (for example, including the kitchen) are merely for illustrative purposes. The rotation sense of doors and the distribution of sanitary fittings are not binding. The surface areas shown are approximate and, may be altered for technical and/or legal reasons in the course of the construction work.



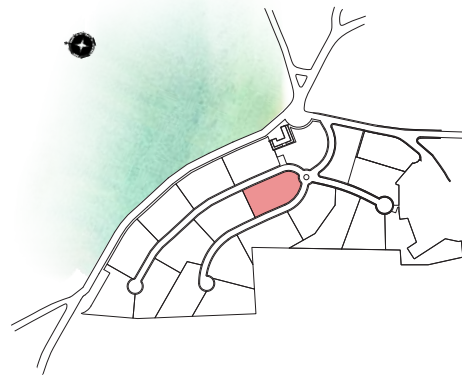


CORALLISA

SIGNATURE HOMES IBIZA

VILLA 7 BASEMENT

Plot surface	1.515,30 sqm
Basement	205,02 sqm
Ground Floor	321,88 sqm
Total Interior	526,90 sqm
Covered Terrace	52,78 sqm
Uncovered Terrace	179,65 sqm
Total Exterior	232,43 sqm
Total Interior & Exterior	759,33 sqm



Project developed by:
CORALLISA 2019 PRIME DEVELOPMENT

The floor plan above is not final as it has been designed in accordance with the Building Execution Project and, consequently, CORALLISA 2019 PRIME DEVELOPMENT reserves the right to include whatever changes due to technical and/or legal imperatives required by any public Administration or Agency. These changes, in any case, will be in accordance with the progress of the construction work. The accessory elements (for example, including the kitchen) are merely for illustrative purposes. The rotation sense of doors and the distribution of sanitary fittings are not binding. The surface areas shown are approximate and, may be altered for technical and/or legal reasons in the course of the construction work.

